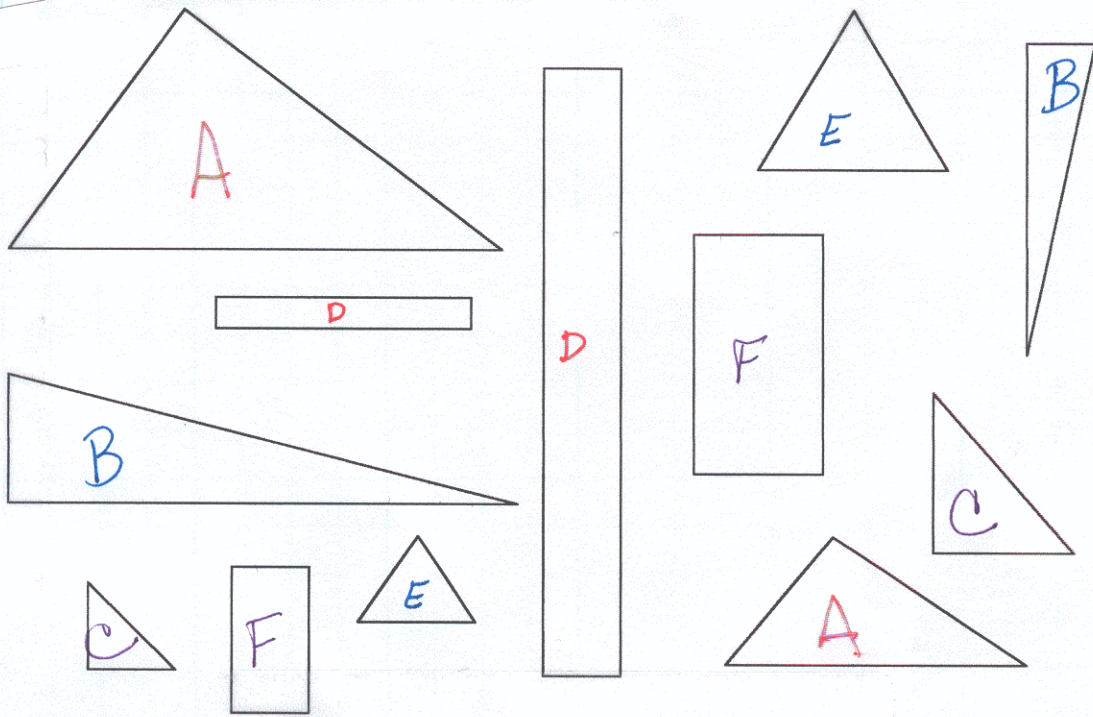


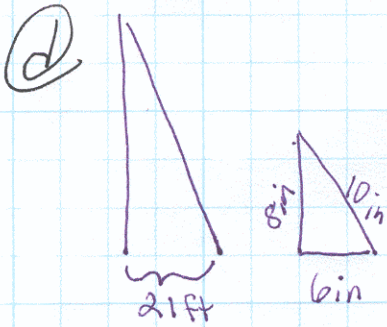
3-4-2 similar shapes pg 5



a)  $\frac{12}{7} = \frac{48}{x}$  28 inches

b)  $\frac{\text{short}}{\text{midsize}} = \frac{20}{25} = \frac{105}{x}$  131.25 ft

c)  $\frac{\text{base}}{\text{height}} = \frac{54}{60} = \frac{4}{x}$  0.225 ft



$\frac{\text{base}}{\text{height}} = \frac{6}{8} = \frac{21}{x}$  28 ft

$\frac{\text{base}}{\text{wire}} = \frac{6}{10} = \frac{21}{x}$  35 ft

e)  $\frac{\text{length}}{\text{width}} = \frac{5}{3} = \frac{x}{20}$  33 1/3 in.

f)  $\frac{\text{length}}{\text{Perimeter}} = \frac{15}{108.5} = \frac{7}{x}$  50.63 in.

g)  $\frac{\text{large}}{\text{small}} = \frac{1}{3/4} = \frac{12}{x}$  9 miles

h)  $\frac{\text{long}}{\text{short}} = \frac{1.5}{.5} = \frac{x}{5}$  15"

$\frac{3/2}{2} = \frac{x}{1.3}$   $\frac{x}{402} = \frac{42}{12}$   
2.275 cm 1407 mi