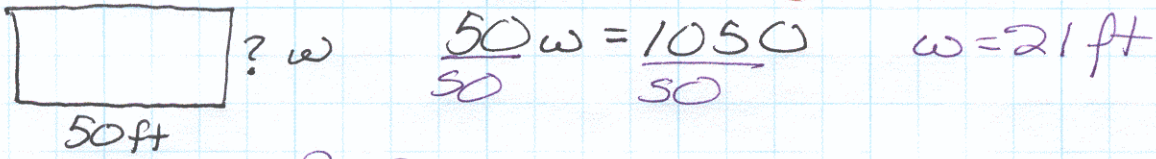


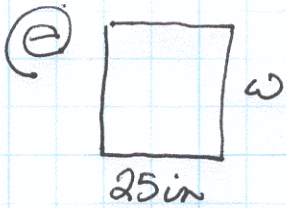
These are only a few possibilities.

The perimeters are next to each example.

7 rooms times 150 sqft 1050 sqft total



$P = 2 \cdot 50 + 2 \cdot 21 = 142ft$

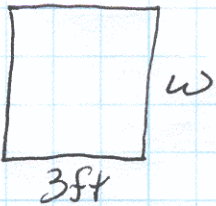


$P = 255 = 2 \cdot 25 + 2w$   
 $255 = 50 + 2w$   
 $-50 \quad -50$   


---

 $205 = 2w$   
 $102.5in = w$

$A = 25 \cdot 102.5$   
 $2562.5 sqin$

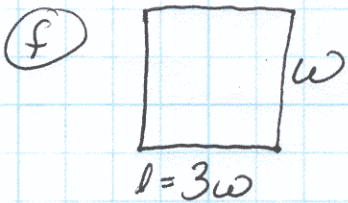


$P = 24 = 2w + 2 \cdot 3$   
 $24 = 2w + 6$   
 $-6 \quad -6$   


---

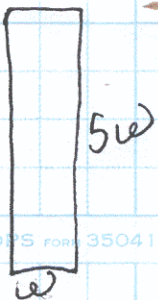
 $18 = 2w$   
 $9 = w$

$A = 3 \cdot 9$   
 $27 sqft$



$P = 1200 = 2w + 2l$   
 $1200 = 2w + 2 \cdot 3w$   
 $1200 = 2w + 6w$   
 $1200 = 8w$   
 $150m = w$   
 $l = 3w = 450m$

$A = 150 \cdot 450$   
 $67500 sqm$



$P = 36cm = 2w + 2(5w)$   
 $36cm = 2w + 10w$   
 $36cm = 12w$   
 $3cm = w$   
 $l = 15cm$

Area =  $3 \cdot 15$   
 $45 sqcm$