

# 5-4-2 Slope Intercept Form

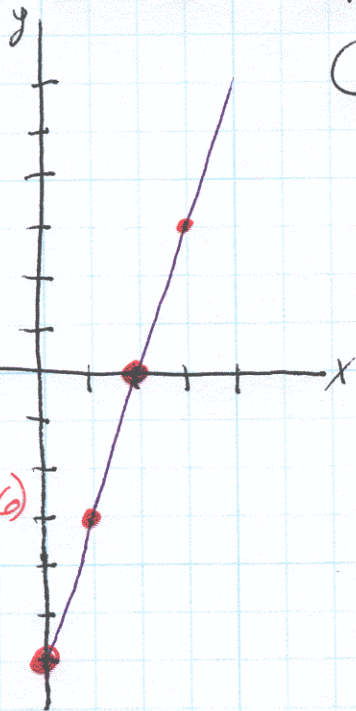
a)  $y = 3x - 6$

x	y
0	-6
2	0

$m = \frac{-6-0}{0-2} = 3$

slope = 3  
y intercept (0, -6)

$y = 3x - 6$



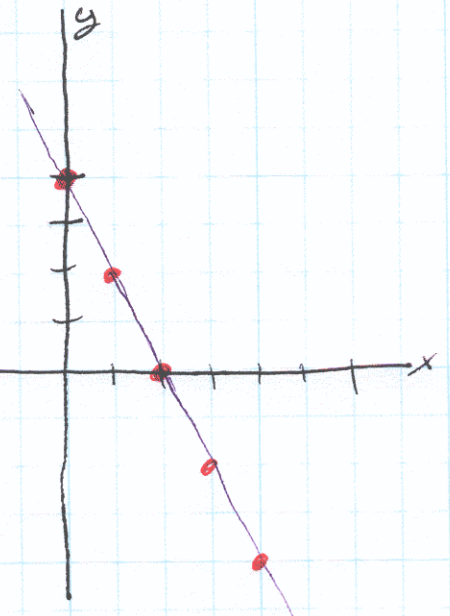
b)  $y = -2x + 4$

x	y
0	4
2	0

$m = \frac{4-0}{0-2} = -2$

slope = -2  
y intercept (0, 4)

$y = -2x + 4$

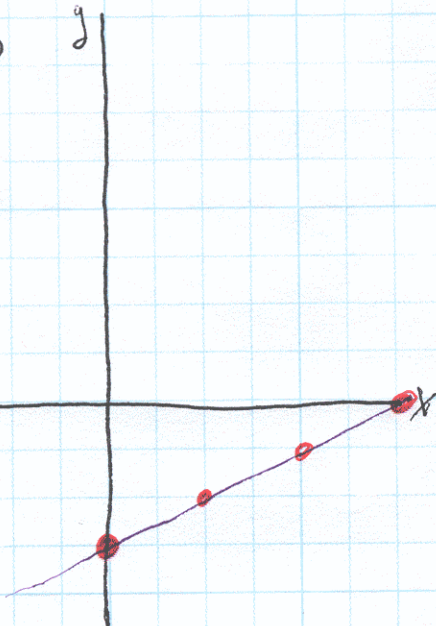


c)  $y = \frac{1}{2}x - 3$

x	y
0	-3
6	0

$m = \frac{-3-0}{0-6} = \frac{1}{2}$

$y = \frac{1}{2}x - 3$

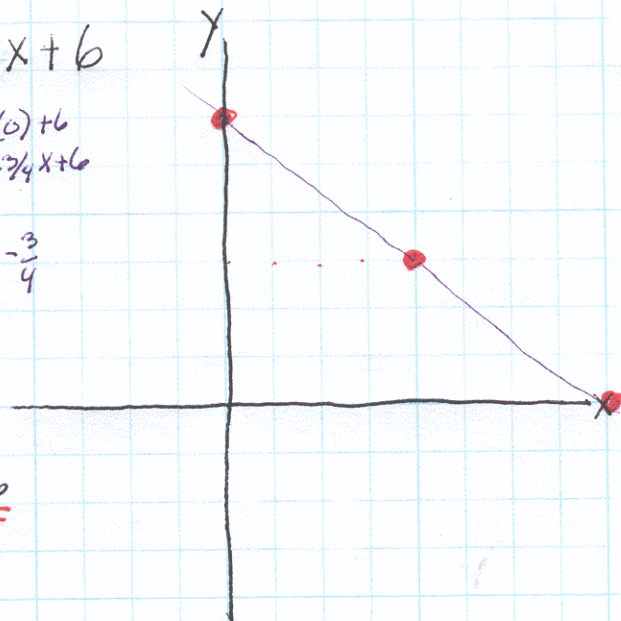


d)  $y = -\frac{3}{4}x + 6$

x	y
0	6
8	0

$m = \frac{6-0}{0-8} = -\frac{3}{4}$

$y = -\frac{3}{4}x + 6$



e)  $y = 5x + 3$

slope = 5  
y intercept (0, 3)

$y = 3x + 1$

slope = 3  
y intercept (0, 1)

$y = \frac{3}{4}x + 3$

slope = 3/4  
y intercept (0, 3)

$y = x + \frac{2}{3}$

slope = 1  
y intercept (0, 2/3)